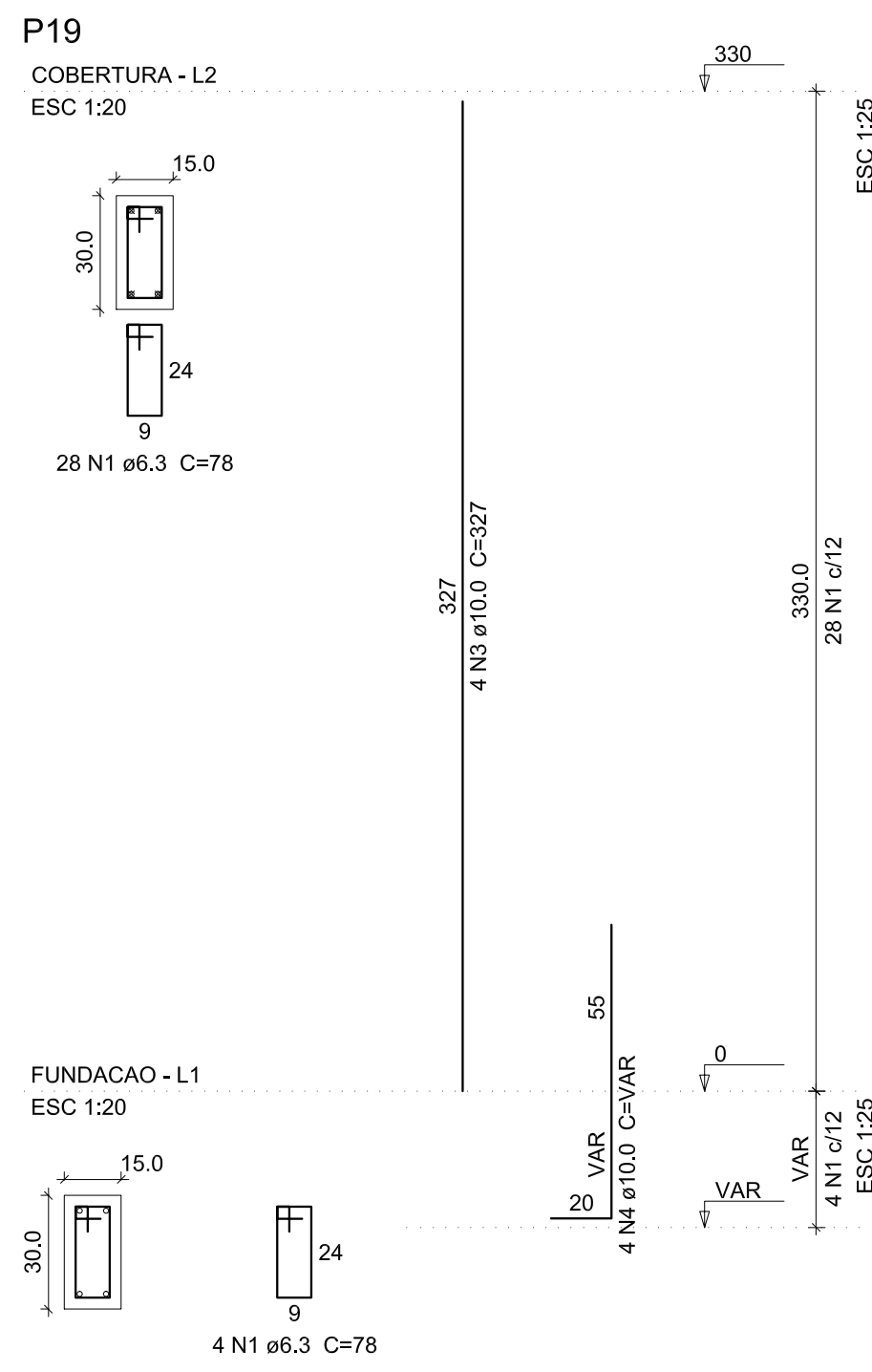
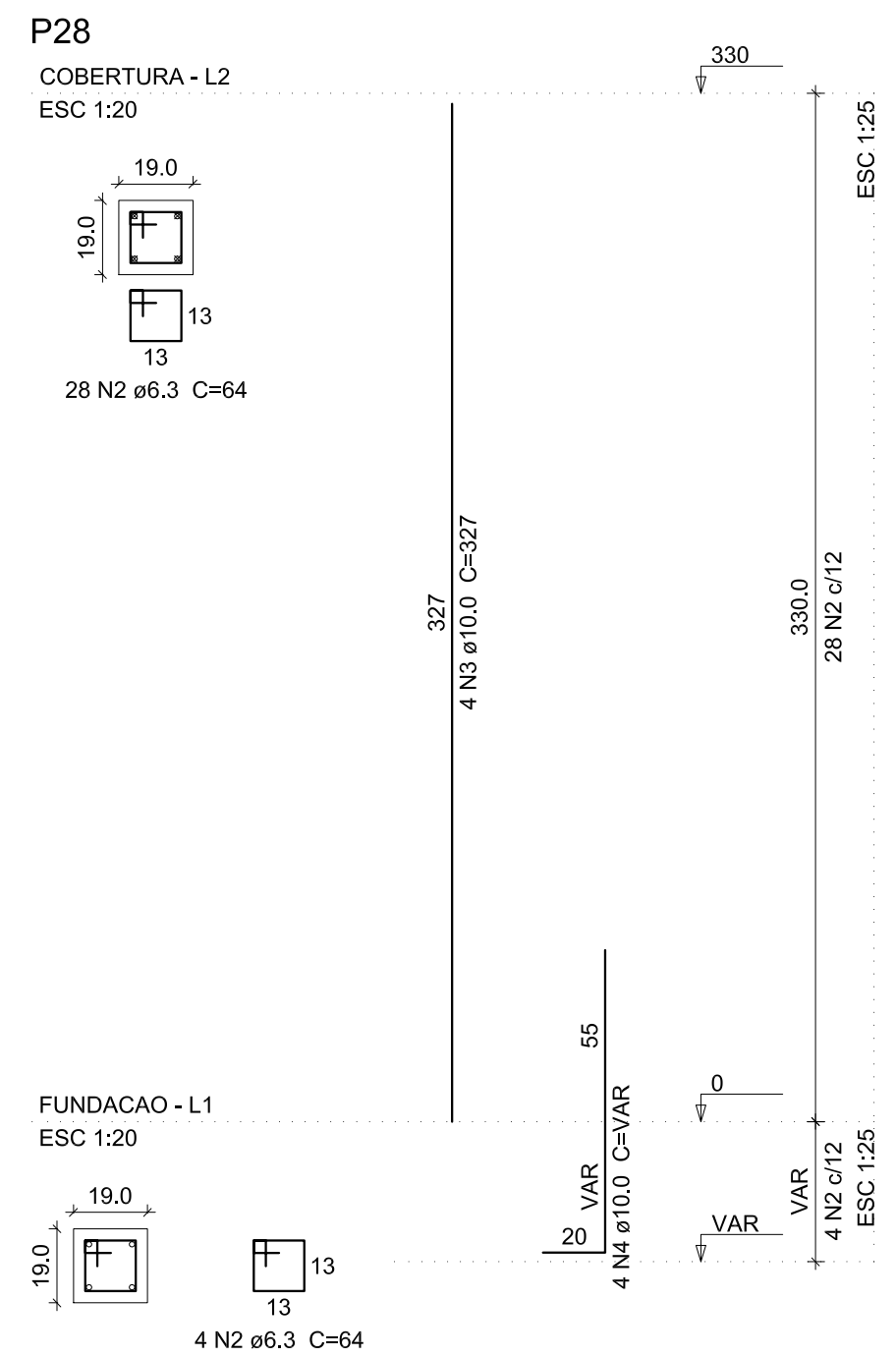
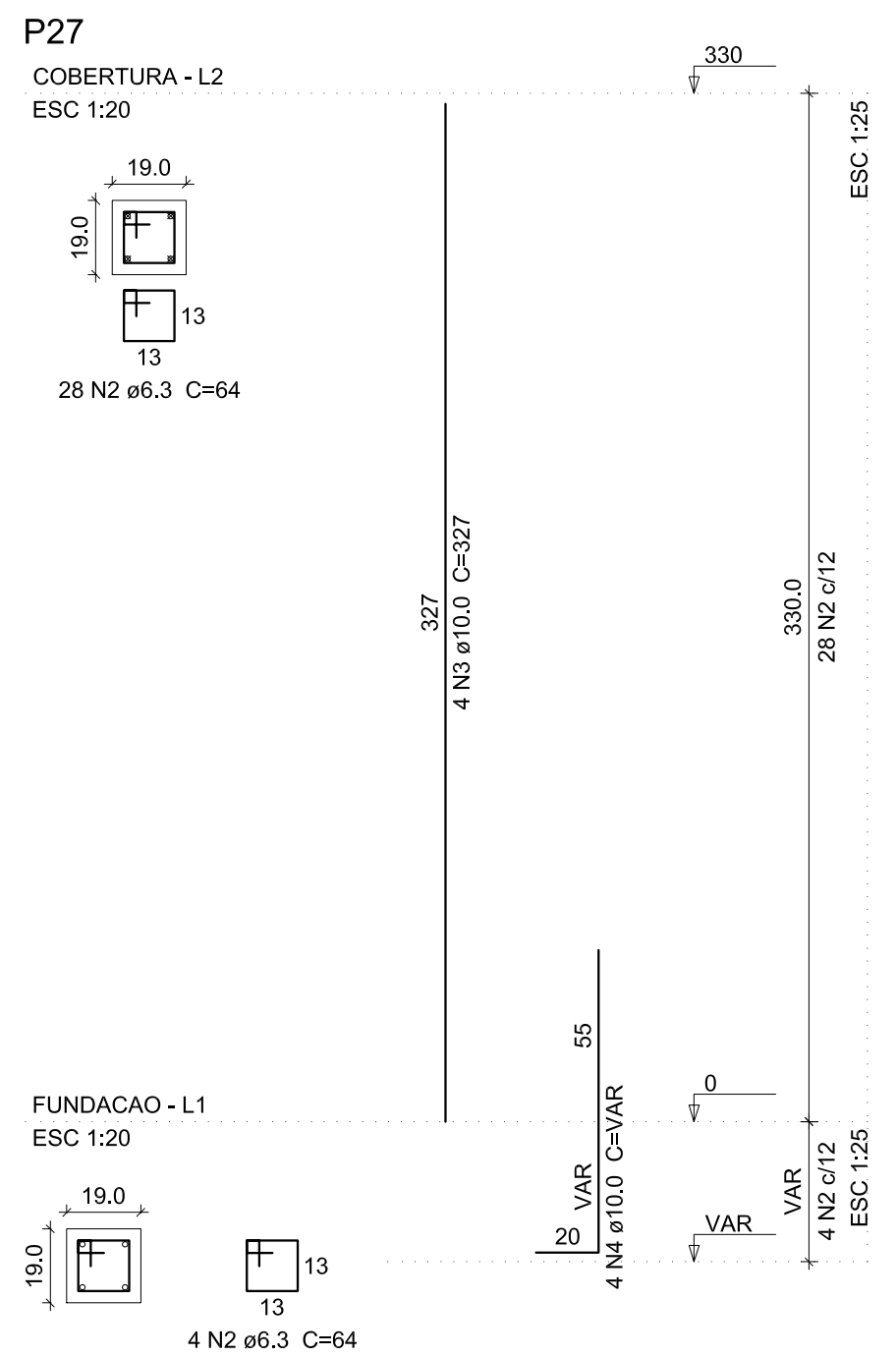
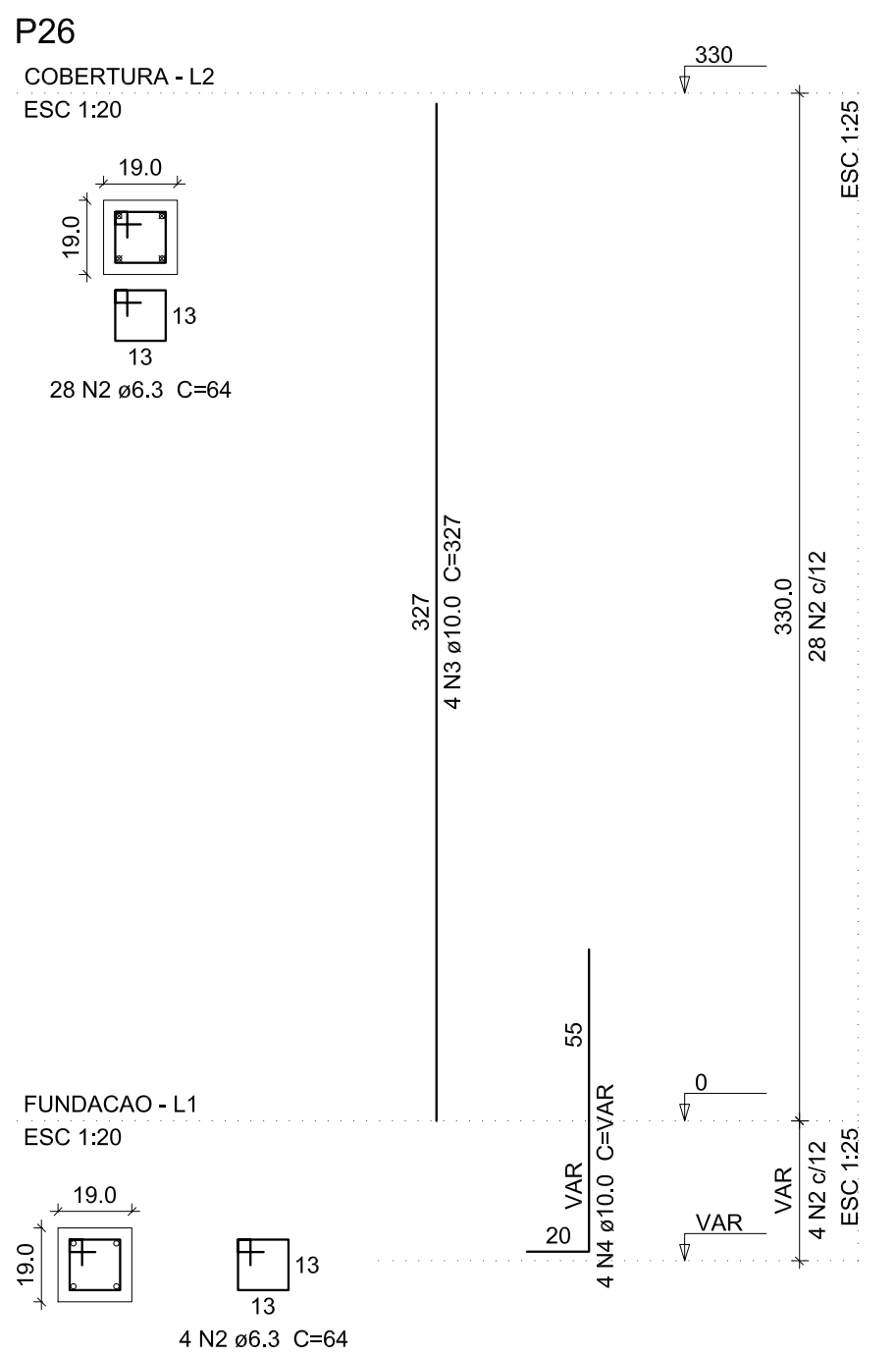
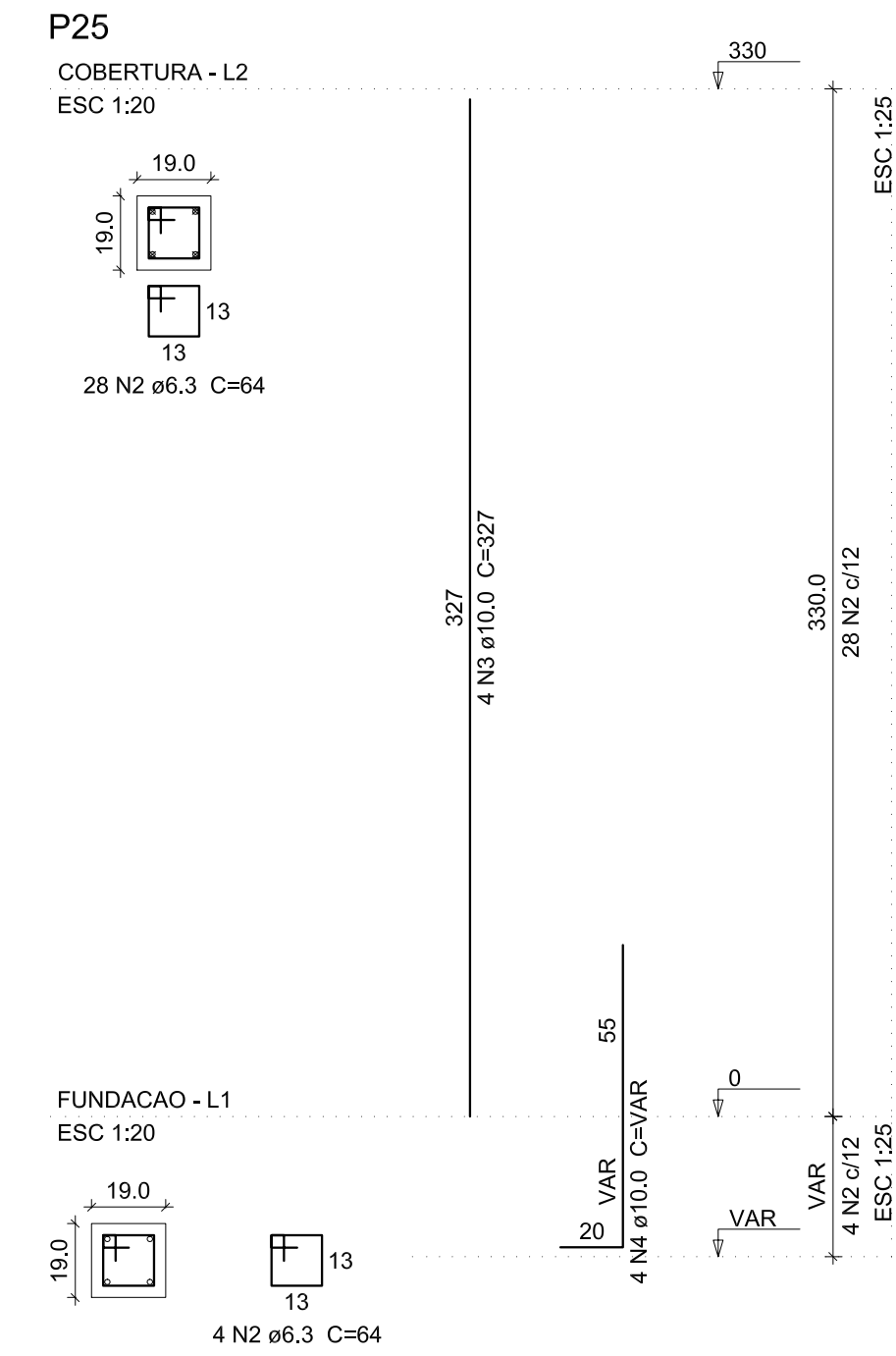
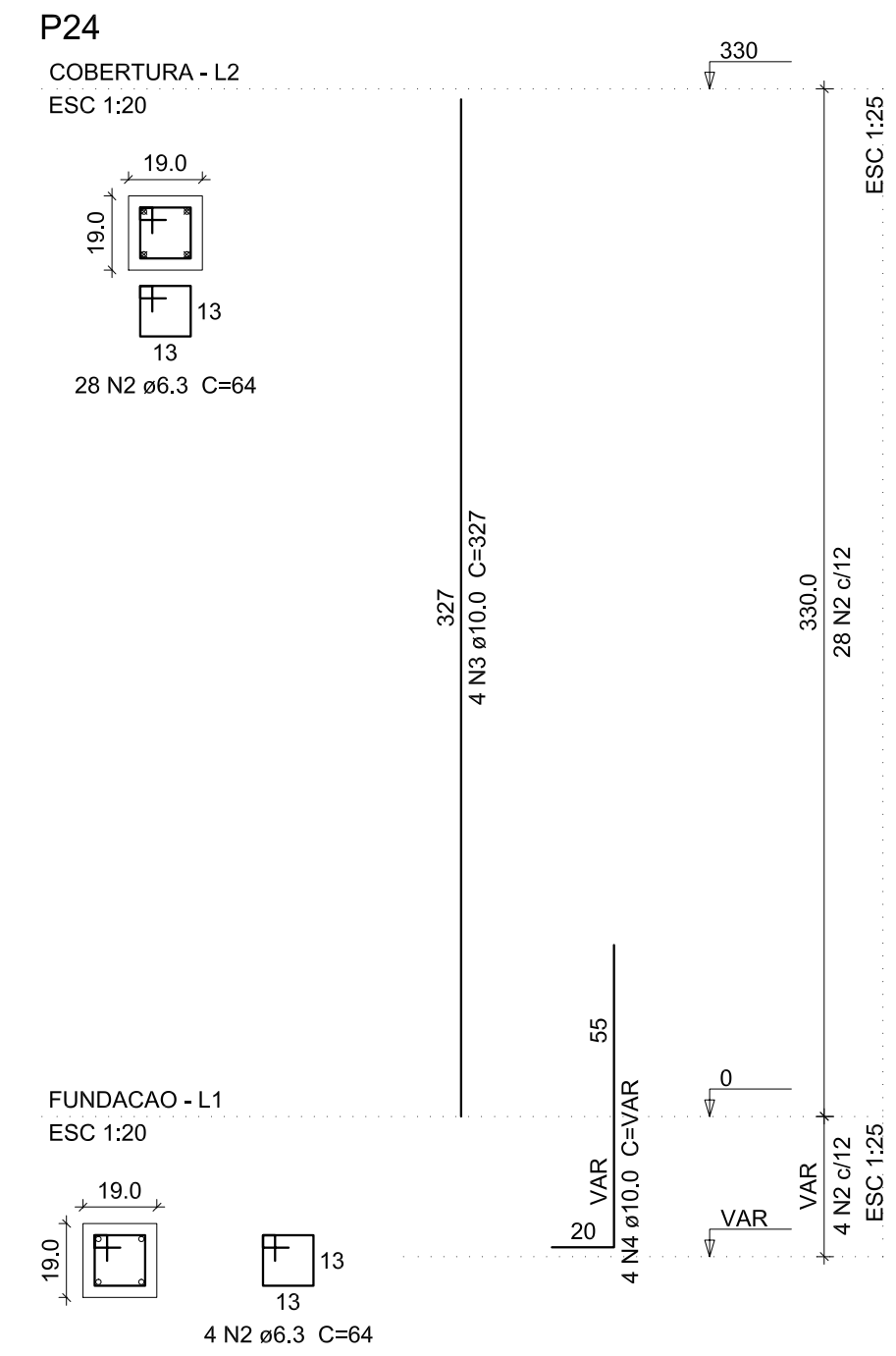
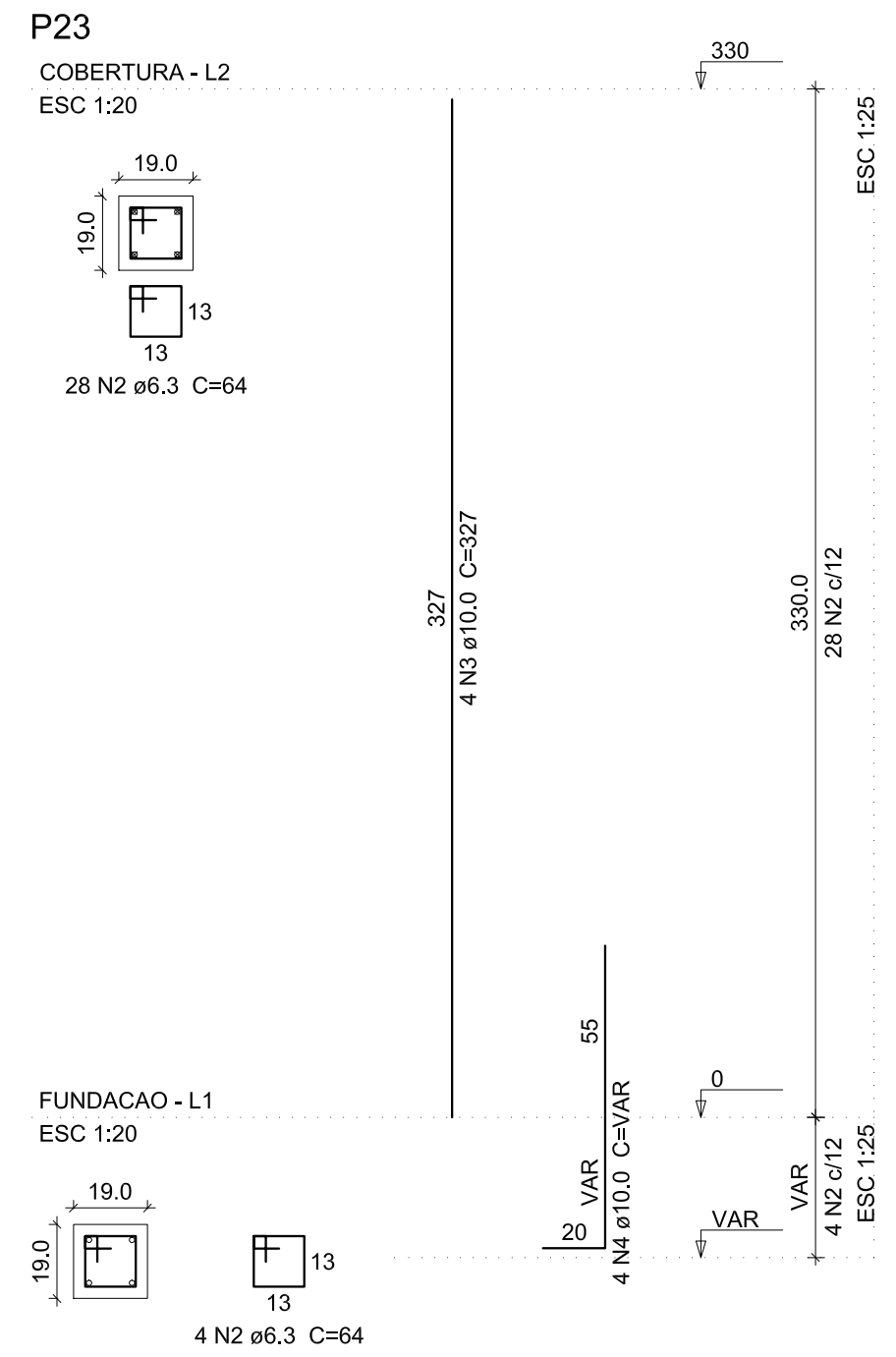
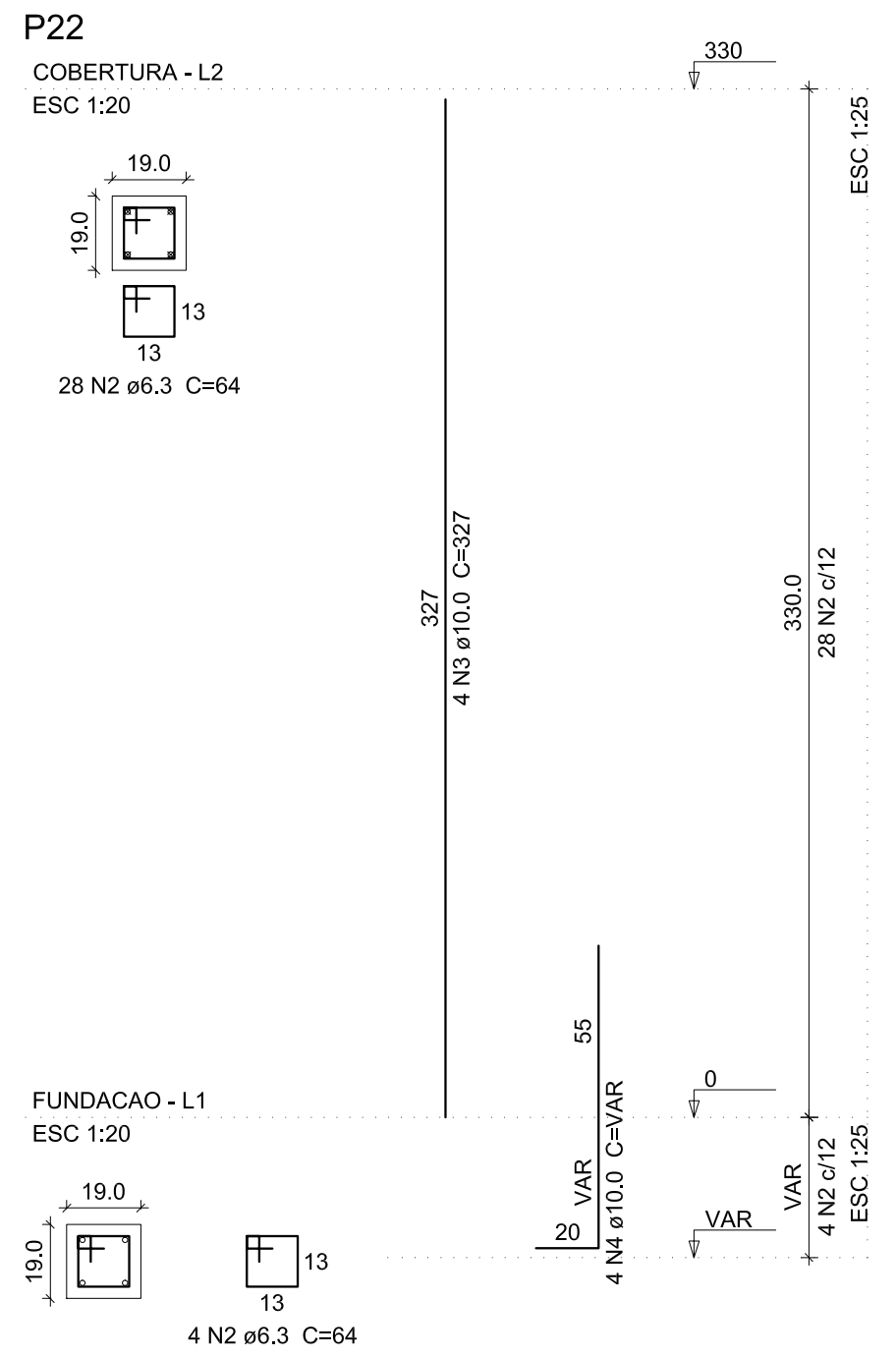
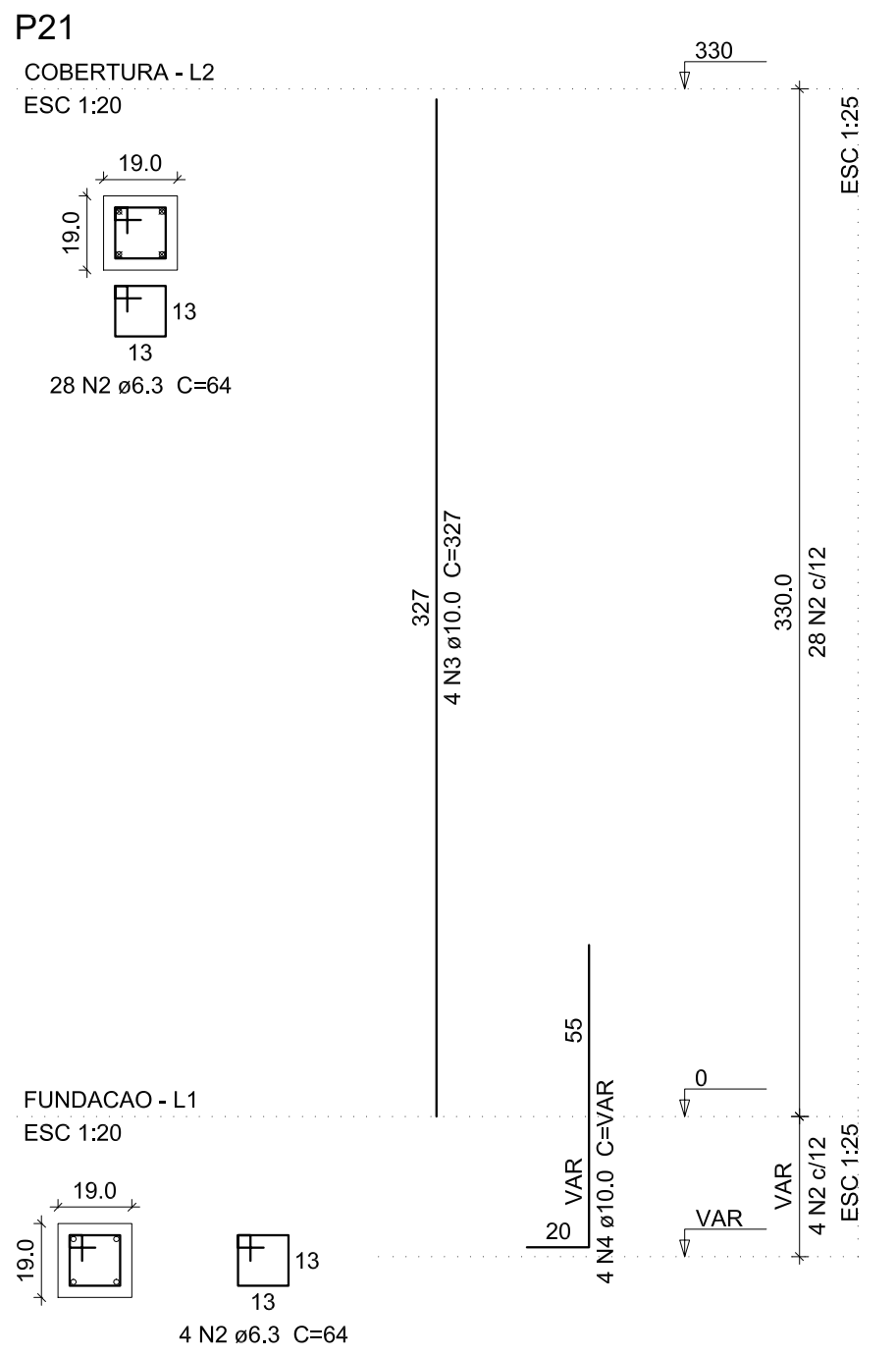
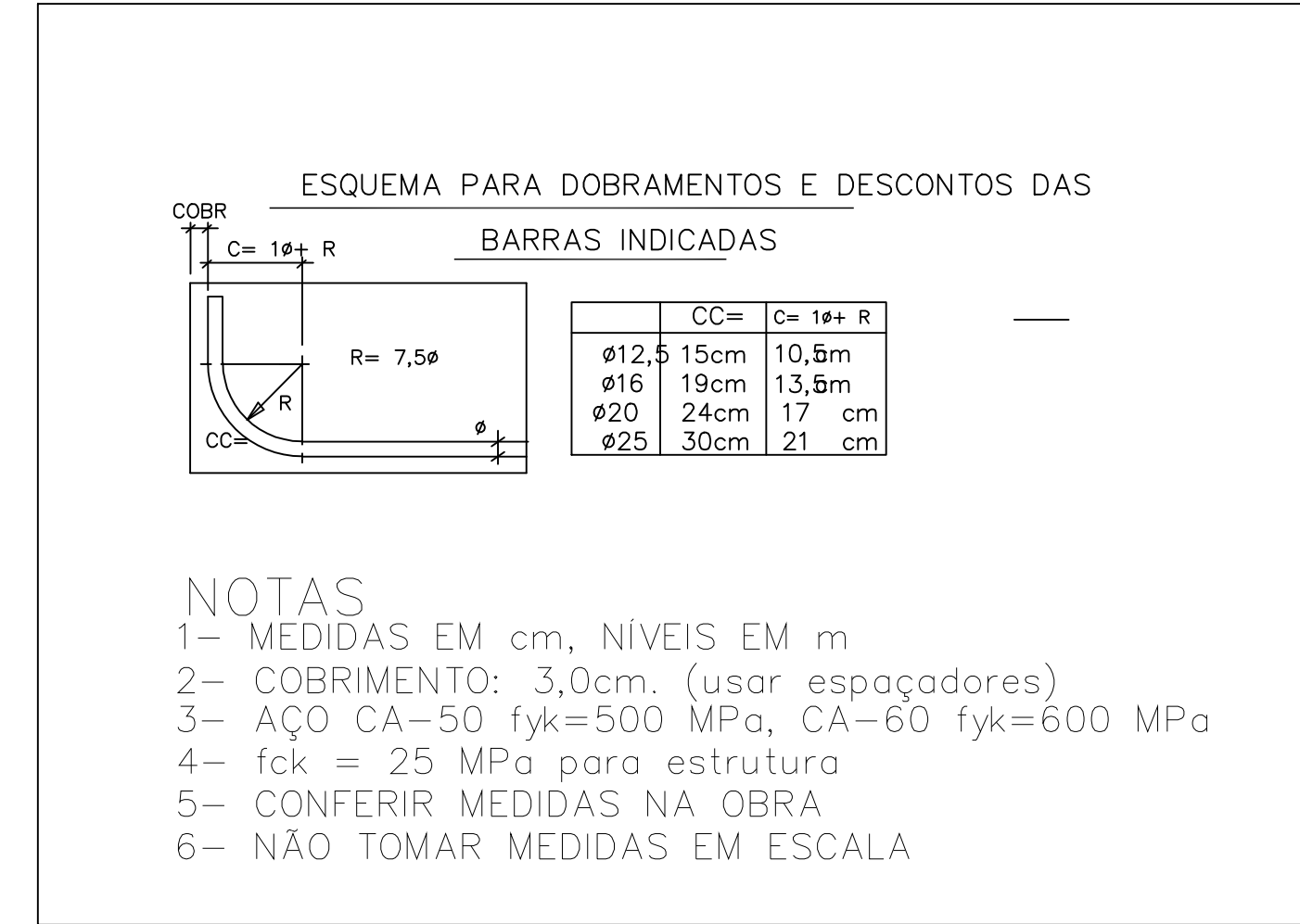
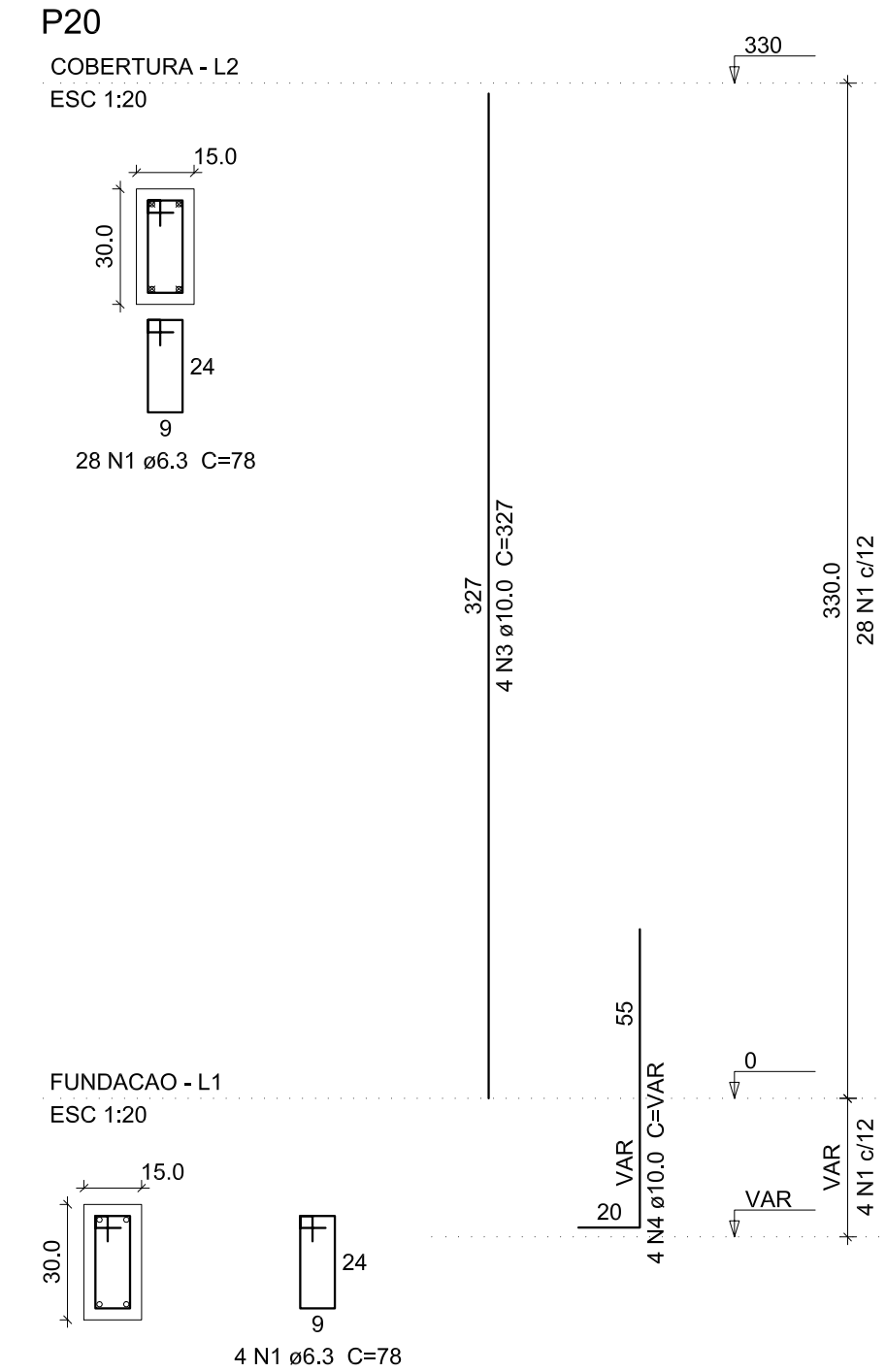
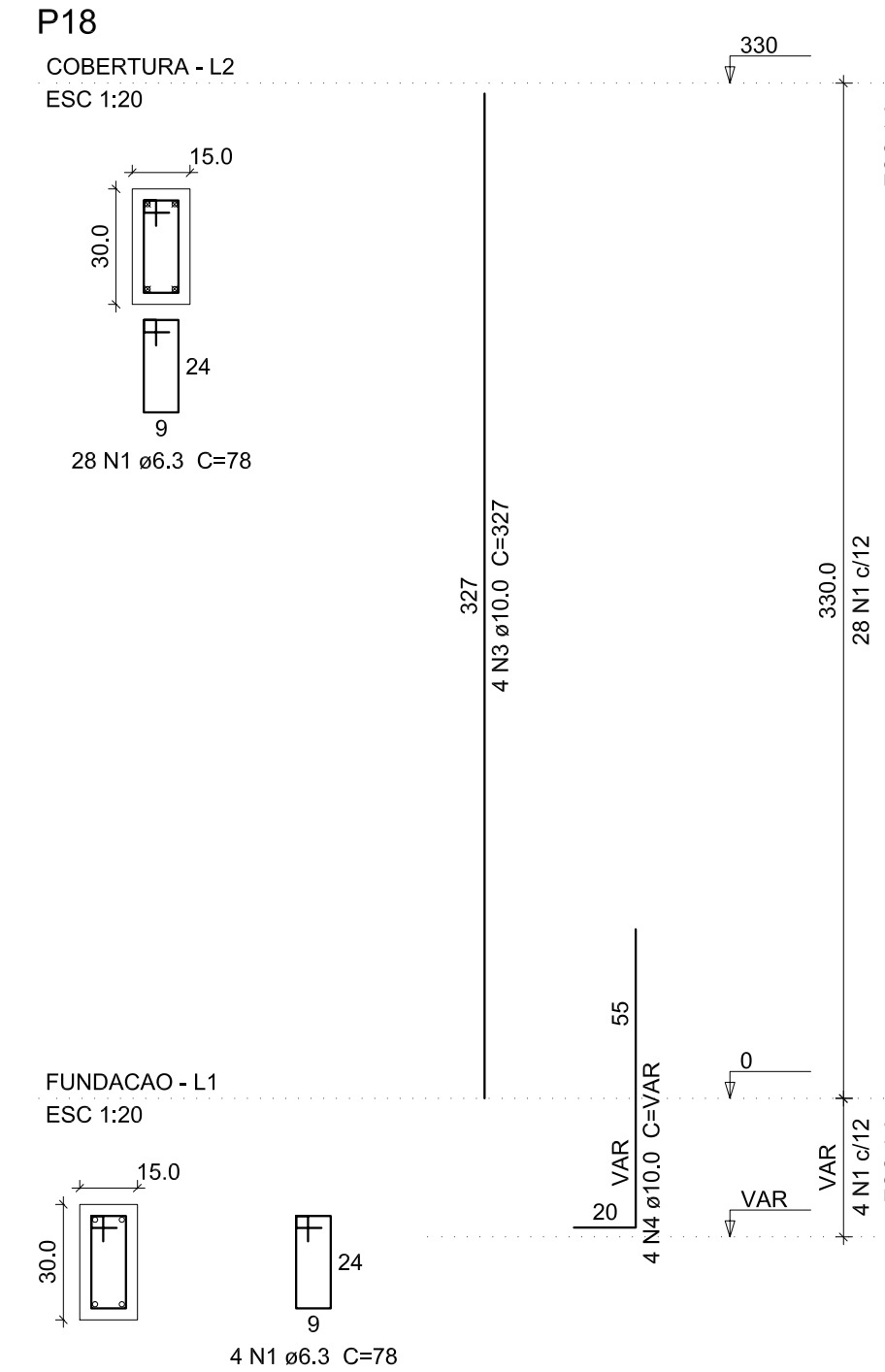
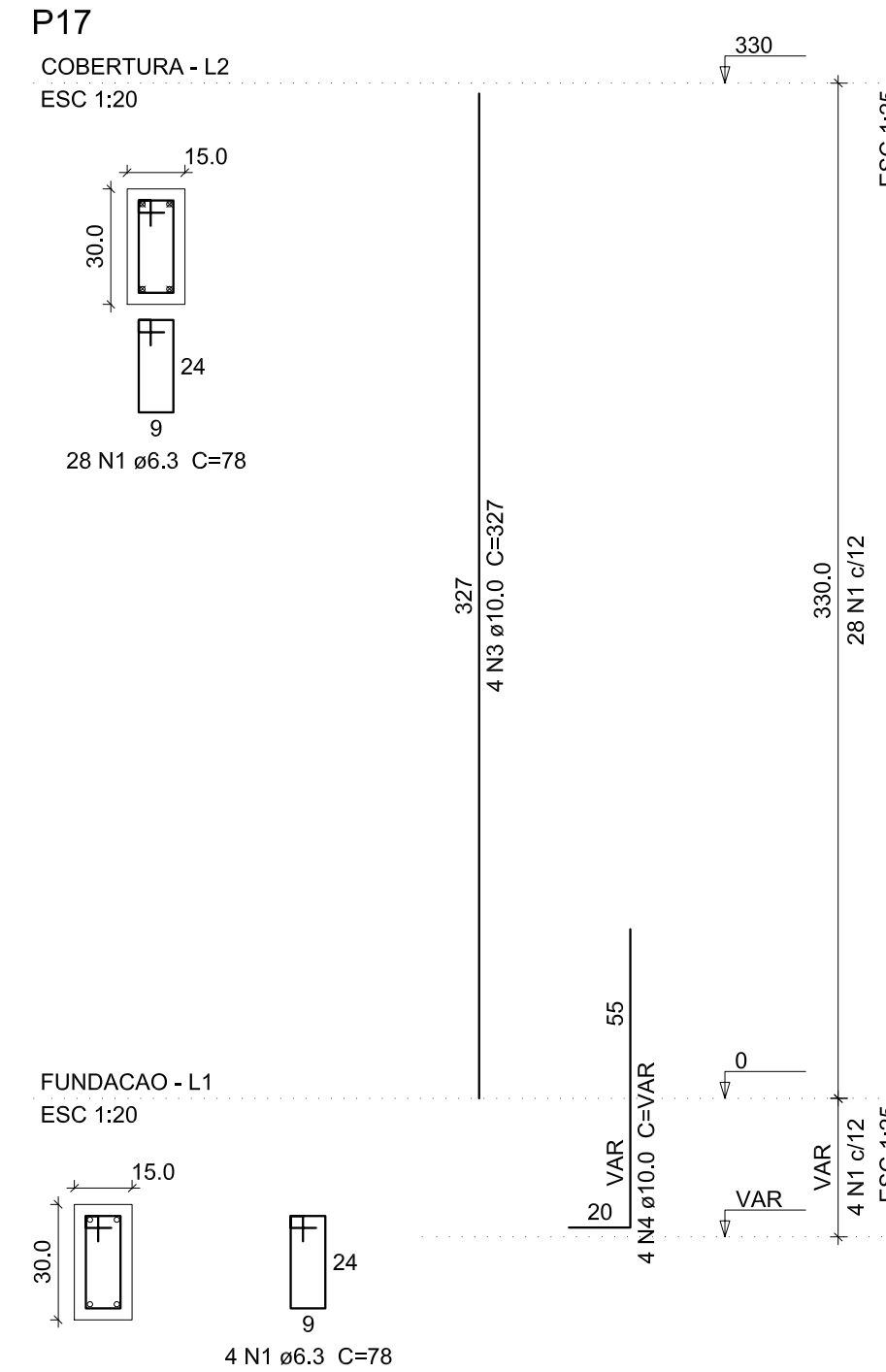
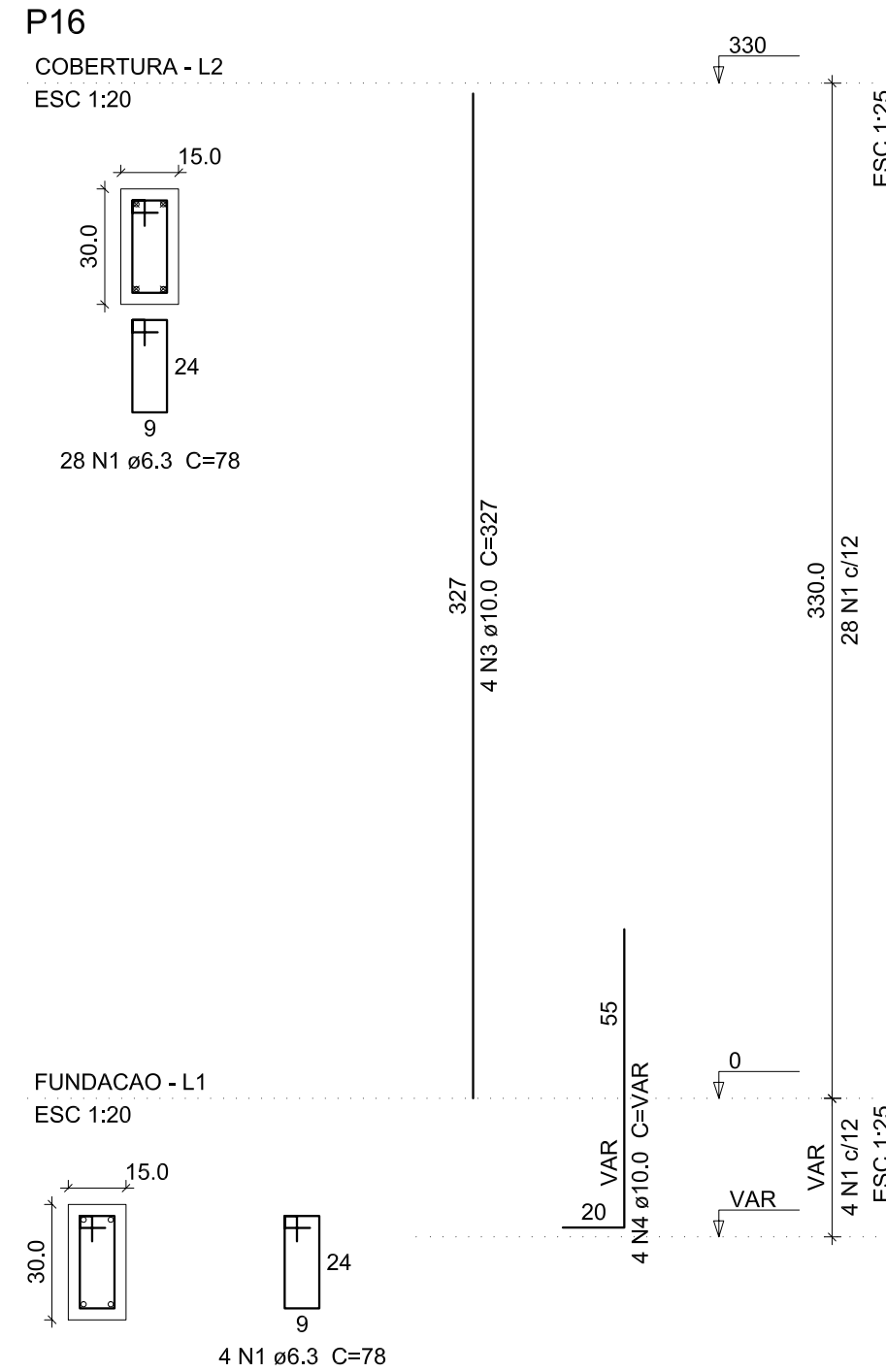
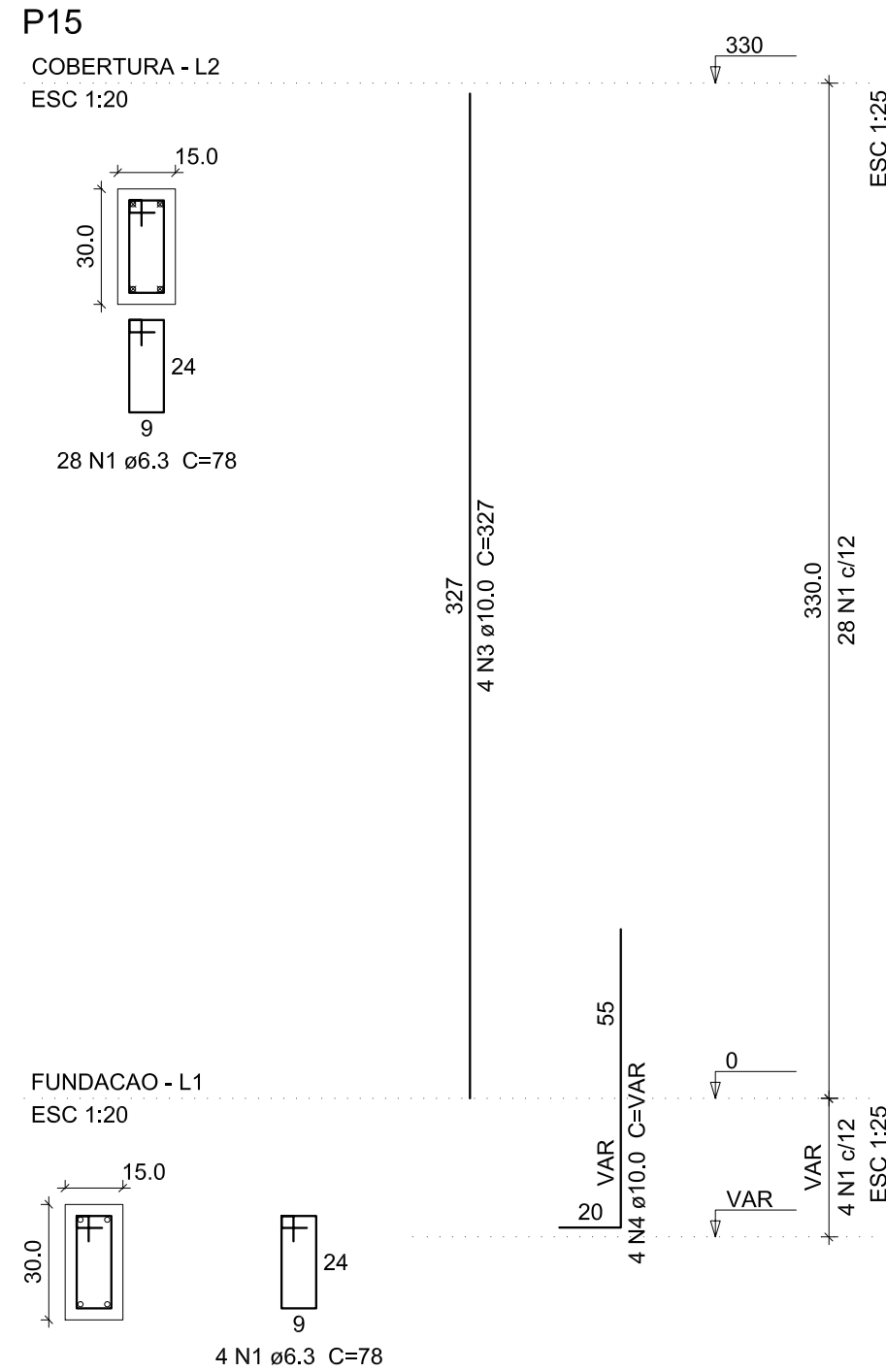


# 08 — ARMAÇÃO DOS PILARES



Relação do aço

	P15	P16	P17
P18			
P21			
P24			
P27			

AÇO	N	DIAM (mm)	QUANT	C.UNIT (cm)	C.TOTAL (cm)
CA50	1	6.3	192	78	14976
	2	6.3	256	64	16384
	3	10.0	56	327	18312
	4	10.0	56	VAR	VAR

Resumo do aço

AÇO	DIAM (mm)	C.TOTAL (m)	PESO + 10 % (kg)
CA50	6.3	313.6	84.4
	10.0	247.6	167.9

PESO TOTAL (kg)

CA50	252.3
------	-------

Volume de concreto (C-30) = 2.1 m³  
Área de forma = 43.05 m²

## PREFEITURA DO MUNICÍPIO DE ITAPEVI

SECRETARIA DE INFRAESTRUTURA  
E SERVIÇOS URBANOS



Título: ARENA AMADOR BUENO

Projeto: PROJETO DE ESTRUTURA

Obra: EQUIPAMENTO DE ESPORTE E LAZER

Local do Imóvel: ESTRADA DO PRADO, S/N - AMADOR BUENO  
ITAPEVI/ SP

Proprietário: PREFEITURA MUNICIPAL DE ITAPEVI

Ramon Medrano de Almada  
Secretário de Infraestrutura  
e Serviços Urbanos  
Prefeitura Municipal de Itapevi  
CNPJ nº: 46.523.031.0001-28

Antônio Carlos do Amaral Cardoso  
ENGENHEIRO CIVIL  
CREA: 0682274502

ASSUNTO:	ARMAÇÃO DOS PILARES		Folha:
PAVIMENTO:	TÉRREO	ESCALA:	
		INDICADA	ESTRUTURAL
ZONEAMENTO:		DATA:	ETAPA:
		Novembro / 2020	BÁSICO
DESENHISTA:		IMPRESSO EM:	REVISÃO:
		16/ 11/ 2020	00

# 8/8

PENAS		
COR	Nº	SHADE
1	7	0.100
2	7	0.200
3	7	0.300
4	7	0.500
5	7	0.700
6	7	0.800
7	7	0.900
8	7	0.800
9	7	0.050

COR	Nº	SHADE
251	251	358
252	252	358
253	253	358
254	254	358